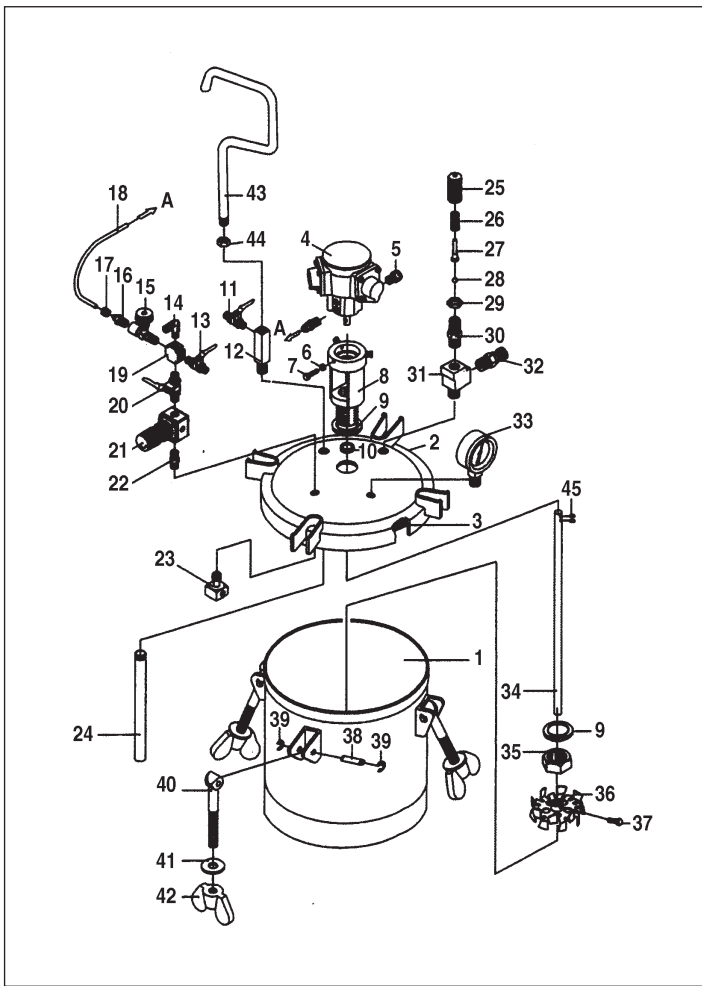




Stainless Steel Pressure Tanks



VKI17P0101AS00 Model with agitator
 Agitating style: **AUTO**
 Capacity: **4 litres**
 Max. working pressure: **4 bar**
 Max. working temperature: **100°C**
 Min. working temperature: **-30°C**
 Fluid outlet: **3/8" NPT**
 Air inlet: **1/4" NPT**
 Weight: **6.9 Kg**



SPARE PARTS

No.	Description	Q'ty	No.	Description	Q'ty
1	Material tank	1	24	Fluid tube	1
2	Lid Assembly	1	25	Safety valve shell	1
3	Gasket	1	26	Spring	1
4	Air motor	1	27	Needle rod	1
5	Silencer	1	28	Steel ball	1
6	Hexagon nut	1	29	Hexagon nut	1
7	Screw bolt	1	30	Adapter	1
8	Motor base	1	31	Branch Tee	1
9	Seal ring	2	32	Release valve	1
10	O-ring	1	33	Pressure gauge	1
11	Paint outlet cock	1	34	Agitating rod	1
12	Material outlet adapter	1	35	Hexagon nut	1
13	Air outlet cock	1	36	Agitating blade	1
14	Elbow (air inlet)	1	37	Screw bolt	1
15	Air valve	1	38	Cotter pin	4
16	Adapter	2	39	C-snap ring	8
17	Nut	2	40	Swing bolt	4
18	Air hose	1	41	Washer	4
19	Branch four	1	42	Thumb nut	4
20	Air inlet cock	1	43	Handle	1
21	Pressure regulator	1	44	Nut	1
22	Adapter	1	45	Screw bolt	2
23	Air flow guider	1			

VKI17P0101S00 Model without agitator
 Capacity: **4 litres**
 Max. working pressure: **4 bar**
 Max. working temperature: **100°C**
 Min. working temperature: **-30°C**
 Fluid outlet: **3/8" NPT**
 Air inlet: **1/4" NPT**
 Weight: **5.4 Kg**



GENERAL DESCRIPTION

The equipment described in this manual is a stainless steel pressure tank, for paint spraying systems.

The pressure inside the tank allows the paint to be sprayed at a pressure between 0 and 4 bar.

This pressure tank is equipped with an air motor, an air pressure regulator, a safety valve, a release valve, a fluid outlet and inlet joint. All components have been made with the finest materials and have been strictly inspected before assembly to ensure durability of the tank.

The surface of the tank has been treated with special paint for enhanced durability and to give the tank a pleasant appearance.

The material being sprayed can be automatically agitated by the air motor, that keeps it smooth during spraying, preventing the material settling and resulting in uniform colour distribution when spraying. The characteristics of this versatile tank, allow the operator to carry out many tasks with professional results.

The stainless steel pressure tank is recommended for the application of water-based material, alkaline material, corrosive material or high viscosity material.

CAUTION

In order to guarantee perfect performance, it is recommendable to clean the pressure tank thoroughly after each use.

This also prolongs the life span of the tank and reduces the need to replace spare parts.

WARNING

Never exceed the max. recommended air pressure level (4 bar) in order to avoid any rupture or explosion of the tank.

- The safety valve prevents the over pressurization of the tank, its permitted setting range is 4 bar. During each use, check that the safety valve operates freely and relieves air pressure. The safety valve must be replaced if it is blocked. In case of damage do not alter or substitute any parts, but replace it completely.
- Do not make any alterations to the pressure tank. Tampering (drilling, welding etc.) will weaken the tank and cause injury.
- Maximum operating pressure of the tank is 4 bar. The tank can explode if this level is exceeded.
- Do not adjust the original setting of the safety valve, if not strictly necessary.

OPERATION

Before use, make sure that the tank does not contain any remaining pressurized air. If there is, release it by turning the release valve counter-clockwise, until pressure goes down to zero.

1. Loosen all thumb nuts and swing bolts. Then remove the lid assembly away from the main tank.
2. Pour the material to be sprayed into the tank.
3. Place lid assembly and tighten it securely to main tank.
4. Connect the air supply hose to the air inlet. It is recommended to use an air filter between the air supply hose and air inlet, to filter the air from any dirt, water or oil, which can contaminate the material being sprayed.
5. Connect the atomizing air hose of the gun, to air outlet valve.
6. Turn the inlet air valve clockwise in order to generate sufficient speed for the air motor to agitate the material.
7. Connect the material hose to the material outlet valve.
8. Supply air, adjusting air pressure regulator to correct working pressure level that does not exceed the maximum working level of 4 bar.

9. Open the air outlet valve
10. Open the fluid outlet valve.
11. Atomizing air of the spray gun, can be adjusted by turning the air adjustment valve of the gun. Alternatively, an air regulator kit can be added to the tank after pos. 16.
12. Operate spray gun.

MAINTENANCE AND CLEANING

1. Before maintenance and cleaning, close the main air supply and release pressure to the tank.
2. To prevent accidents and injury, before opening the lid of the tank, release air valve, to discharge remaining air pressure inside the tank.
3. Turn adjustment screw on pressure regulator counter-clockwise, to reduce pressure down to 0 bar.
4. Remove lid from tank, by loosening all thumb nuts, pulling clamps back and lifting tank lid.
5. Remove fluid from the tank then pour suitable cleaner into it.
6. Fit the lid on the tank and fix it, tightening the thumb-nuts.
7. Open the air supply, using air inlet valve.
8. Lay a metal part of the gun against a grounded metal container. Then trigger the gun into the container until cleaner comes out from the gun.
9. Remove the cleaner from the system and wipe the inside of the tank and the rest of the equipment .

KEEP SAFETY VALVE CLEAN AT ALL TIMES.

TROUBLESHOOTING CHART

Problem	Cause	Remedy
Indicator on air pressure gauge does not function.	Broken or damaged pressure gauge.	Replace pressure gauge.
Pressure leakage registered on gauge.	Dirty or worn o-ring (valve seat) on regulator.	Clean or replace o-ring (valve seat).
Material settles rapidly.	Not enough agitation of material.	Increase agitation.
Fluid leaks or air escapes from lid gasket.	Defective lid gasket or thumb nuts are not adequately tightened.	Replace lid gasket or tighten thumb nuts.

Note: Check pressure gauge periodically. The position of the needle should return to zero when no pressure is registered on gauge.

Distributed by:

ANEST IWATA Europe

Corso Vigevano, 46 - 10155, Torino - Italy
Tel: +39 011 22 74 402 - Fax: +39 011 22 74 406
info@anest-iwataeu.com
www.anest-iwataeu.com