

DESCRIPTION	REF. PART	DESCRIPTION	REF. PART
AIR CAP SET	1	TRIGGER STUD	7
JAM NUT	2	TRIGGER	8
CAP	3	PLUG	9
FLUID NOZZLE	4	SEAT CUP	10
GUN BODY	5	LID SET	10-1
SEAT VALVE	6	SUCTION TUBE	10-2
VALVE	6-1	ALUMINIUM CONTAINER	10-3
AIR VALVE SEAT SET	6-2	PACKING SET	C
AIR VALVE	6-3	MILLED NUT	B

AZ PVA SPRAY GUN FOR BODY COATINGS



GB Before use, adjustment or maintenance, it is important to read this instruction manual very carefully. This manual must be stored in a safe place for any future reference that may be necessary.

IMPORTANT

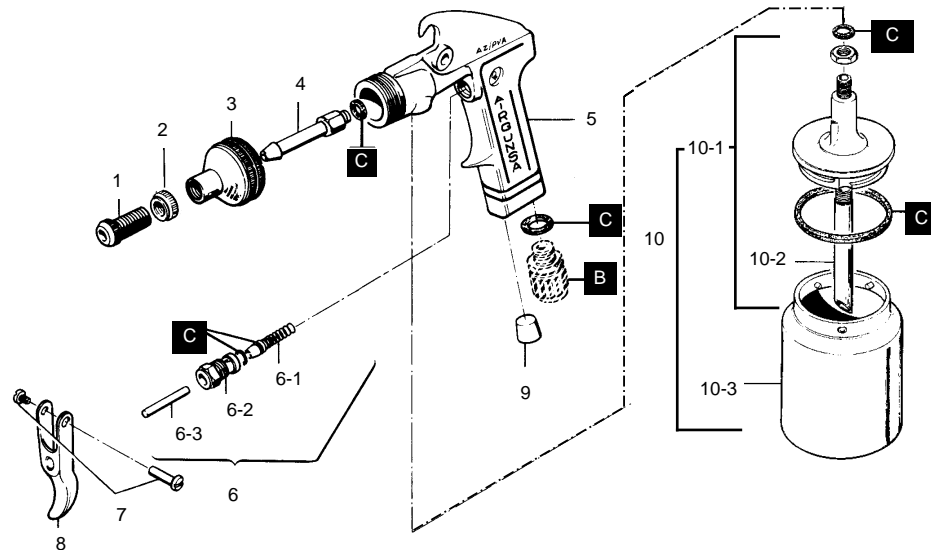
This spray gun should be operated only by an adequately trained operator, for safe use and maintenance of the equipment. Any misuse or handling other than those indicated in this Instruction Manual is not covered by guarantee. AIR GUNSA disclaims all responsibility for any accident or damage caused by failure to observe the operational and safety procedures as from this manual. In the interest of user friendliness, this manual contains information in a brief and concise form.

For any additional information you may require regarding spray guns operations, or if any missing parts or any damage during transportation is found, please contact your nearest ANEST IWATA Company (see last cover page).

MAIN SPECIFICATIONS

Max. Working Pressure:	6 bar (8,58 PSI)	Noise Level (LAeqT)	87.3 dB (A)
Temperature range:	5~40C°		

Model	Type of feed	Air Consumption l/min	Weight gr
AZ PVA	SUCTION	343	840



Air Nipple G1/4" BSP M



AIR GUNSA S.r.l.
46, Corso Vigevano -10155 Torino - Italy
Tel. +39 011-24 80 868
Fax +39 011-85 19 44
www.anest-iwataeu.com
e-mail: info@anest-iwataeu.com

EUROPEAN
SALES
BRANCHES:

ANEST IWATA Europe S.r.l.
Corso Vigevano 46, 10155 Torino - Italy
Tel. 011-24 80 868 (4 linee ric. aut.)
Fax 011-85 19 44

ANEST IWATA France S.A.
38074 Saint Quentin Fallavier
Cedex Centre Evolic B.P. 7405
Tél. 04 74 94 59 69
Fax 04 74 94 34 39

ANEST IWATA (U.K.) LTD
Unit 2, Cedar Trade Park,
Ferndown Industrial Estate,
Wimborne, Dorset - BH21 7SB U.K.
Tel. 01202 - 895999 Fax: 01202 - 895666

Manufactured by: **AIR GUNSA S.r.l.** -Via degli Arceri, 1 20010 Cardano al Campo (VA) Italy

SAFETY WARNINGS



FIRE OR EXPLOSION HAZARD

1. Fluid and solvents can be highly flammable or combustible.
 - Use in well-ventilated spray booth.
 - Avoid any ignition sources such as smoking, open flames, electrical hazard, etc.

2. NEVER use HALOGENATED HYDROCARBON SOLVENTS (1.1.1 TRICHLORINE, ETHYL CHLORIDE, etc.), which can chemically react with aluminium and zinc parts and cause an explosion. Be sure that all fluids and solvents used are chemically compatible with aluminium and zinc parts.

If in doubt, consult your fluid or solvent supplier to ensure compatibility. Details of materials used in the gun are available on request.

3. To reduce the risk of static sparking, grounding continuity to the spray equipment and object being sprayed must be maintained.



MISUSE HAZARD

1. NEVER point gun in the direction of human body.
2. NEVER exceed the maximum safe working pressure of the equipment.
3. ALWAYS release air and fluid pressures before cleaning, disassembling or servicing. For emergency stop and prevention of unintended operation, a ball valve installation near the gun to stop air supply is recommended.



HAZARD CREATED WHILE COATING MATERIALS ARE ATOMIZED AND SPRAYED

1. Toxic vapours produced by spraying certain materials can create intoxication and serious damage to health.
 - Use the gun in well-ventilated areas.
 - Always wear protective eyewear, gloves, respirator, etc., to prevent the toxic vapour hazard, solvents and paint from coming into contact with your eyes or skin.
2. Noise level mentioned in main specifications was measured at 1.0 m behind the tip of the gun, 1.6 m height from floor.
 - Wear earplugs if required.



OTHER HAZARDS

1. NEVER enter working areas of robots, reciprocators, conveyors, etc., unless machines are switched off.
2. NEVER spray foods or chemicals through the spray gun.
3. NEVER modify this product for any applications.

INSTALLATION

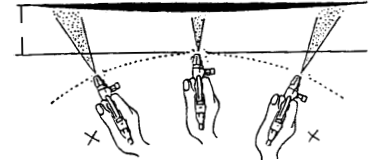
IMPORTANT:

- This gun should be operated by adequately trained operators only.
- Ensure that the gun has not been damaged during transportation.
- Clean dry air should be supplied to the gun.

1. Connect an air hose to air hose joint tightly.
2. Flush the gun fluid passage with a compatible solvent.
3. Test spray, and adjust fluid output as well as pattern width.

HOW TO OPERATE

Set the spray distance from the gun to the workpiece as near as possible within the range of 150 - 200 mm. (From 5.9 to 7.7 inch)
The gun should be held so that gun is perpendicular to the surface of the workpiece at all times.



MAINTENANCE AFTER PAINTING



WARNING

TURN OFF AIR AND COATING MATERIALS TO THE GUN AND RELEASE PRESSURE BY TRIGGERING THE GUN BEFORE DISASSEMBLING, CLEANING OR SERVICING.
PAY ATTENTION WHEN DISASSEMBLING SPRAY GUN SINCE YOU MUST TOUCH SHARP PARTS.
BEFORE DISASSEMBLING READ CAREFULLY THIS INSTRUCTION MANUAL.

- 1) Pour remaining paint into another container and then clean paint passages and air cap. Spray a small amount of thinner to clean paint passages. Incomplete cleaning will cause bad operations. Clean fully and promptly paint after use.
- 2) Clean other sections with attached brush soaked with thinner and waste cloth.
- 3) Clean paint passages fully before disassembly.



WARNING

NEVER USE COMMERCIAL OR OTHER PARTS INSTEAD OF AIR GUNSA ORIGINAL SPARE PARTS
NEVER IMMERSE THE WHOLE GUN INTO LIQUID SUCH AS THINNER

DESCRIPTION	REF. PART	DESCRIPTION	REF. PART
OUTER NOZZLE	1	TRIGGER STUD	6
MILLED NUT FOR OUTER HOSE	2	TRIGGER	7
AIR CAP SET	3	PLUG	8
GUN BODY	4	LID KIT WITH HOSE	9
SEAT VALVE	5	LID	9-1
VALVE	5-1	SUCTION HOSE	9-2
AIR VALVE SEAT SET	5-2	PACKING SET	C
AIR VALVE	5-3	MILLED NUT	B

AZ PVA TN SPRAY GUN FOR BODY COATINGS

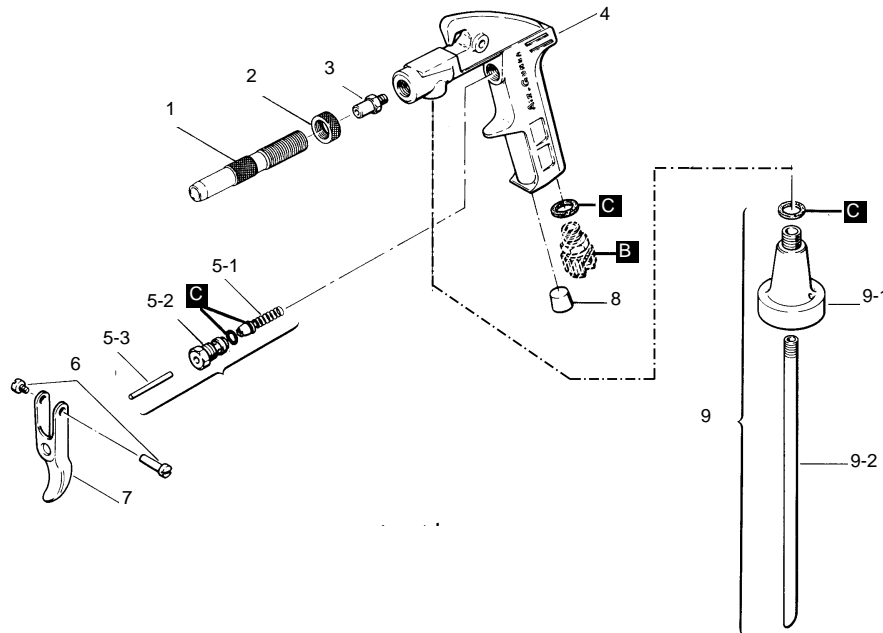


GB Before use, adjustment or maintenance, it is important to read this instruction manual very carefully. This manual must be stored in a safe place for any future reference that may be necessary.

IMPORTANT

This spray gun should be operated only by an adequately trained operator, for safe use and maintenance of the equipment. Any misuse or handling other than those indicated in this Instruction Manual is not covered by guarantee. AIR GUNSA disclaims all responsibility for any accident or damage caused by failure to observe the operational and safety procedures as from this manual. In the interest of user friendliness, this manual contains information in a brief and concise form.

For any additional information you may require regarding spray guns operations, or if any missing parts or any damage during transportation is found, please contact your nearest ANEST IWATA Company (see last cover page).



MAIN SPECIFICATIONS

Max. Working Pressure:	6 bar (8,58 PSI)	Noise Level (LAeqT)	81.3 dB (A)
Temperature range:	5~40C°		

Model	Type of feed	Air Consumption l/min	Weight gr
AZ PVA TN	SUCTION	350	650

Air Nipple G1/4" BSP M



AIR GUNSA S.r.l.
46, Corso Vigevano -10155 Torino - Italy
Tel. +39 011-24 80 868
Fax +39 011-85 19 44
www.anest-iwataeu.com
e-mail: info@anest-iwataeu.com

EUROPEAN
SALES
BRANCHES:

ANEST IWATA Europe S.r.l.
Corso Vigevano 46, 10155 Torino - Italy
Tel. 011-24 80 868 (4 linee ric. aut.)
Fax 011-85 19 44

ANEST IWATA France S.A.
38074 Saint Quentin Fallavier
Cedex Centre Evolic B.P. 7405
Tél. 04 74 94 59 69
Fax 04 74 94 34 39

ANEST IWATA (U.K.) LTD
Unit 2, Cedar Trade Park,
Ferndown Industrial Estate,
Wimborne, Dorset - BH21 7SB U.K.
Tel. 01202 - 895999 Fax: 01202 - 895666

Manufactured by: **AIR GUNSA S.r.l.** -Via degli Arceri, 1 20010 Cardano al Campo (VA) Italy

MA0010EREV0

SAFETY WARNINGS



FIRE OR EXPLOSION HAZARD

1. Fluid and solvents can be highly flammable or combustible.
 - Use in well-ventilated spray booth.
 - Avoid any ignition sources such as smoking, open flames, electrical hazard, etc.

2. NEVER use HALOGENATED HYDROCARBON SOLVENTS (1.1.1 TRICHLORINE, ETHYL CHLORIDE, etc.), which can chemically react with aluminium and zinc parts and cause an explosion. Be sure that all fluids and solvents used are chemically compatible with aluminium and zinc parts.

If in doubt, consult your fluid or solvent supplier to ensure compatibility. Details of materials used in the gun are available on request.

3. To reduce the risk of static sparking, grounding continuity to the spray equipment and object being sprayed must be maintained.



MISUSE HAZARD

1. NEVER point gun in the direction of human body.
2. NEVER exceed the maximum safe working pressure of the equipment.
3. ALWAYS release air and fluid pressures before cleaning, disassembling or servicing. For emergency stop and prevention of unintended operation, a ball valve installation near the gun to stop air supply is recommended.



HAZARD CREATED WHILE COATING MATERIALS ARE ATOMIZED AND SPRAYED

1. Toxic vapours produced by spraying certain materials can create intoxication and serious damage to health.
 - Use the gun in well-ventilated areas.
 - Always wear protective eyewear, gloves, respirator, etc., to prevent the toxic vapour hazard, solvents and paint from coming into contact with your eyes or skin.
2. Noise level mentioned in main specifications was measured at 1.0 m behind the tip of the gun, 1.6 m height from floor.
 - Wear earplugs if required.



OTHER HAZARDS

1. NEVER enter working areas of robots, reciprocators, conveyors, etc., unless machines are switched off.
2. NEVER spray foods or chemicals through the spray gun.
3. NEVER modify this product for any applications.

INSTALLATION

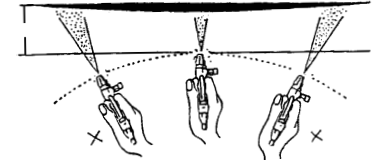
IMPORTANT:

- This gun should be operated by adequately trained operators only.
- Ensure that the gun has not been damaged during transportation.
- Clean dry air should be supplied to the gun.

1. Connect an air hose to air hose joint tightly.
2. Flush the gun fluid passage with a compatible solvent.
3. Test spray, and adjust fluid output as well as pattern width.

HOW TO OPERATE

Set the spray distance from the gun to the workpiece as near as possible within the range of 150 - 200 mm. (From 5.9 to 7.7 inch)
The gun should be held so that gun is perpendicular to the surface of the workpiece at all times.



MAINTENANCE AFTER PAINTING



WARNING

TURN OFF AIR AND COATING MATERIALS TO THE GUN AND RELEASE PRESSURE BY TRIGGERING THE GUN BEFORE DISASSEMBLING, CLEANING OR SERVICING.
PAY ATTENTION WHEN DISASSEMBLING SPRAY GUN SINCE YOU MUST TOUCH SHARP PARTS.
BEFORE DISASSEMBLING READ CAREFULLY THIS INSTRUCTION MANUAL.

- 1) Pour remaining paint into another container and then clean paint passages and air cap. Spray a small amount of thinner to clean paint passages. Incomplete cleaning will cause bad operations. Clean fully and promptly paint after use.
- 2) Clean other sections with attached brush soaked with thinner and waste cloth.
- 3) Clean paint passages fully before disassembly.



WARNING

NEVER USE COMMERCIAL OR OTHER PARTS INSTEAD OF AIR GUNSA ORIGINAL SPARE PARTS
NEVER IMMERSE THE WHOLE GUN INTO LIQUID SUCH AS THINNER