

PRESSURIZED CONTAINER

PC-18D

PC-18DT P.T.F.E COATED



Before use, adjustment or maintenance, it is important to read this instruction manual very carefully. This manual must be stored in a safe place for any future reference that may be necessary.

IMPORTANT

This pressure container should be operated only by an adequately trained operator, for safe use and maintenance of the equipment. Any misuse or handling other than those indicated in this Instruction Manual is not covered by guarantee. Anest Iwata disclaims all responsibility for any accident or damage caused by failure to observe the operational and safety procedures contained in this manual. In the interest of user friendliness, this manual contains information in a brief and concise format.

For any additional information you may require regarding pressure container operations, or if any missing parts or any damage during transportation is found, please contact your nearest Anest Iwata Company (see last cover page).

SPECIFICATIONS

PC18-DT (For water- base paints): inner surface is fluorine- coated, other wet surfaces are stainless steel

ITEMS

Model
Width x Height mm
Mass
Air hose connection IN
 OUT
Fluid hose connection
Max. Operating fluid pressure
Ambient Temperature range
Operating paint viscosity
Capacity

SPECIFICATIONS

	PC18D	PC18 DT
Model	150 X	345
Width x Height mm	1250 g	1200 g
Mass	G 1/4" M	G 1/4" M
Air hose connection	G 1/4" M	G 3/8" M
Fluid hose connection	3.5 bar	5-40° C
Max. Operating fluid pressure	~96 sec/nk-2	2.0 lt
Ambient Temperature range		
Operating paint viscosity		
Capacity		

ANEST IWATA Europe S.r.l.
 46, Corso Vigevano 10155, Torino Italy
 Direct Tel. +39 011 - 24 80 868
 Fax +39 011 - 22 74 406
 info@anest-iwataeu.com
 www.anest-iwataeu.com

European Sales Branches:

ANEST IWATA Italia S.r.l.
 46, Corso Vigevano 10155, Torino (Italy)
 Tel. diretto +39 011 - 24 80 868 - Fax +39 011 - 85 19 44
 info@anest-iwataeu.com www.anest-iwata.it

ANEST IWATA Scandinavia AB.
 Ögärdesvägen 6C, 433 30 PARTILLE
 Tel. +46 (0)31 - 340 28 60 - Fax +46 (0)31 - 340 28 69
 info@anest-iwata.se www.anest-iwata.se

ANEST IWATA Europe S.r.l.
 SUCURSAL ESPAÑA Y PORTUGAL
 Avda.del Maresme, 44-46 Planta 2 OF. 25 / 08918 - Badalona
 (Barcelona)
 Tel.:+34 933 20 59 93 - Fax: +34 933 20 55 64 - info@anest-iwata.es

ANEST IWATA France S.A.
 25 rue de Madrid - BP 7405 38074 St Quentin Fallavier
 Tél. +33 (0)4 - 74 94 59 69 - Fax +33 (0)4 - 74 94 34 39
 info@anest-iwata.fr www.anest-iwata.fr

ANEST IWATA Europe S.r.l.
 NIEDERLASSUNG DEUTSCHLAND
 Dorfäckerstr. 25, 74248 Ellhofen
 Telefon: +49 (0)7134- 917368 - Fax: +49 (0)7134 - 917378
 Handy: +49 (0)172 - 62 74 542
 f.e.anest-iwata@t-online.de www.anest-iwata.de

ANEST IWATA U.K. Ltd.
 Unit 10 Little End Road - Eaton Socon
 St. Neots - CAMBRIDGESHIRE
 PE19 8JH
 Tel.: +44 (0) 1480 405419 Fax: +44 (0) 1480 217610
 enquiries@anest-iwata.co.uk www.anest-iwata.co.uk

WARNINGS



WEAR PROTECTIVE GEAR



- Be sure to wear protective gear such as proper glasses, mask and gloves during operation. If not, paint or solvent can enter eyes or lungs.
- Never use halogenated hydrocarbon liquids such as 1.1.1 trichloroethane and trichloroethylene. If done, it can cause chemical reaction with product and cause cracks.



PAY ATTENTION TO VENTILATION



- Use in a well ventilated site. Use at badly ventilated or narrow site can cause organic solvent poisoning by sprayed paints or volatile solvents.
- If you feel something wrong with your body during operation, immediately see a doctor.



OPERATING SITE MUST BE STRICTLY FREE FROM ORIGINS OF EXPLOSIONS AND FIRES



- Never use it in a flammable site. Especially the following can cause ignitions or spark: Open fire such as cigarettes, electrical equipment such as stoves, lamps and heaters.



BE CAREFUL ABOUT RUPTURE



- Take special care not to drop it. Never use it with even the slightest damage.
- If lower outside reinforcing sleeve of container becomes loose, it can damage the bottom of the container, causing danger. If the sleeve becomes loose, immediately stop operation and contact the shop which sold it to you.
- Such product can rupture due to reduced ability to withstand pressure.
- Use it at lower than max. operating pressure. If not, product can become damaged causing great danger.
- Always keep safety valve clean. A dirty safety valve can cause failure, creating higher than max. operating pressure on the inside and damaging product.
- Before removing container set, be sure to turn off supply air and release pressure inside container by release valve.
- If you remove container which is under pressure, liquid in container and parts can fly, causing great danger.



NEVER ALTER PRODUCT



- Never alter setting pressure of safety valve. Safety valve is designed to leak air at 3.5 bar. If you alter setting pressure, higher than max. operating pressure is put in container, causing damage of product.
- Be sure to use genuine parts when replacing parts. If not, it can cause inferior performance and damage product.



BE CAREFUL ABOUT GROUNDING



- Securely ground spray gun, workpieces and container containing paint and solvent. Insufficient grounding can cause explosion or fire due to static spark.
- When exhausting paint and solvent during cleaning be sure to use metallic container which receives them, and be sure to ground the container



NEVER USE IT FOR FOOD INDUSTRY

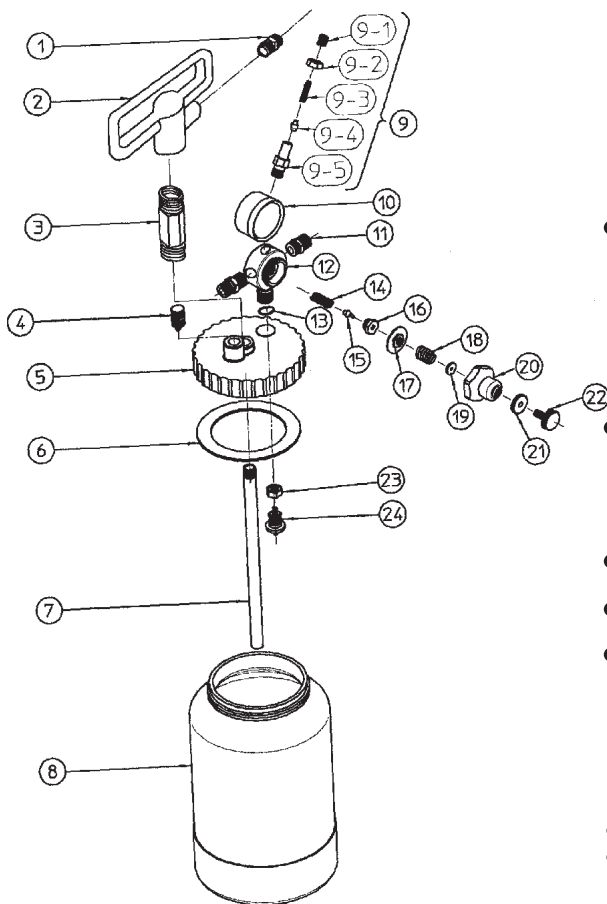


- Do not use it for food industry. If done, foreign matter mixed with parts can cause health problems since it does not use materials which are suitable for food.

PROBLEMS AND REMEDIES

Problems	Causes	Remedies
Paint does not come out	<ol style="list-style-type: none"> 1. Paint clogs. 2. Container is not pressurized. 3. Paint viscosity is too high. 4. Check valve is stuck with paint. 	<ol style="list-style-type: none"> 1. Clean paint passages. 2. Air is not supplied Increase air pressure at air regulator. 3. Dilute paint. 4. Clean (refer to Maintenance and inspection chapter).
Air leaks	<ol style="list-style-type: none"> 1. Release valve is opened. 2. Safety valve operates. 3. Lid packing is damaged. 4. Connection is loose. 5. Inside of air regulator is damaged. 	<ol style="list-style-type: none"> 1. Close it. 2. Reduce pressure at air regulator to less than 3.5 bar. 3. Replace it. 4. Tighten leaky section. 5. Replace air regulator set as a set.
Paint leaks	<ol style="list-style-type: none"> 1. Container set is damaged. 2. Connection is loose. 3. Too much paint in container. 4. Check valve is out of order. 5. Lid packing is damaged. 	<ol style="list-style-type: none"> 1. Replace container set. 2. Tighten leaky section. 3. Reduce its volume to 80% of full capacity. 4. Disassemble and replace parts if necessary. 5. Replace lid packing.

SPARE PARTS LIST



No.	Part name	Quantity	
		-18D	-18DT
1	Fluid Joint	1	
1	Fluid Joint (stainless)		1
2	Handle	1	1
3	Handle Joint	1	
3	Handle Joint (stainless)		1
4	Release Valve	1	1
5	Lid	1	1
6	Lid packing	1	1
7	Suction pipe	1	
7	Suction pipe (stainless)		1
8	Container set	1	
8	Container set(fluorine-coated)		1
9	Safety Valve	1	1
9-1	Plug	1	1
9-2	Hex. nut	1	1
9-3	Safety valve spring	1	1
9-4	Safety valve seat	1	1
9-5	Safety valve body	1	1
10	Pressure gauge	1	1
11	Air joint	1	1
12	Regulator body set	1	
12	Regulator body set		1
13	O ring	1	1
14	Seat spring	1	1
15	Regulator seat	1	1
16	Guide	1	1
17	Diaphragm set	1	1
18	Diaphragm spring	1	1
19	Spring holder	1	1
20	Cap	1	1
21	Jam nut	1	1
22	Knob	1	1
23	Hex. nut	1	
23	Hex. nut		1
24	Check valve set	1	
24	Check valve set		1

● Marked parts are wearable parts.

PREPARATION

IMPORTANT Indicate notes which we ask you to observe. They are helpful to achieve full performance and function of product.

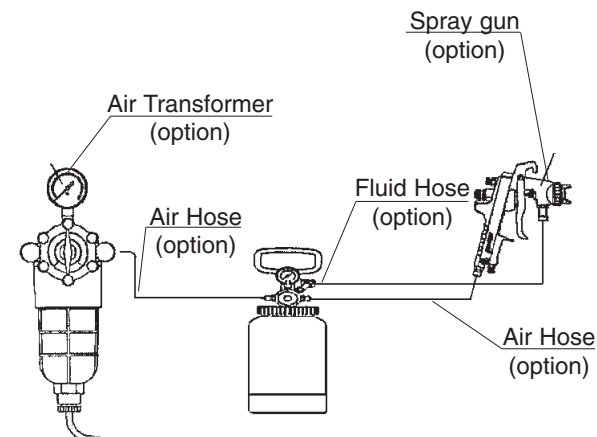
- When you want to decrease pressure, be sure to loosen adjusting screw of air regulator (turn it counter-clockwise) and open release valve.
- Pressure in container will become higher than pointer of pressure gauge shows, depending on check valve.
- Take care so that setting pressure of air regulator does not exceed 3.5 bar (kgf/cm²). Safety valve is designed to leak air at 3.5 bar (kgf/cm²)
- Fill paint up to 80% of full capacity. If filling volume is too high, paint may spill over.



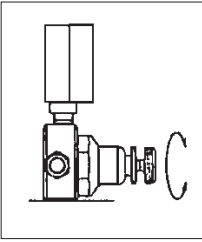
CAUTION

As the inner surface of container for PC-18DT is coated with fluorinated resin, do not rub it with hard metal such as wire brush. And do not use with fluorine- based solvents. If done, it can damage fluorinated resin and reduce non-stickiness as well as cleaning efficiency.

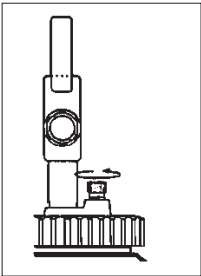
- 1) Refer to below drawing, and connect air hose and fluid hose to pressurized container and spray gun.
- 2) Remove container set and fill with paint.
- 3) Check that packing is fitted to inside of lid and firmly screw in container.



HOW TO USE



- Job 1. Supply air from air transformer to pressurized container and set fluid pressure using air regulator.
- Job 2. Adjust atomizing air pressure with air transformer at air supply source.
- Job 3. Carefully refer to instruction manual of spray gun and start spraying.



- Job 4. When you interrupt a job or replenish paint, be sure to turn off air supply to spray gun and pressurized container, open release valve and release pressure in pressurized container.

MAINTENANCE AND INSPECTION



WARNING

Be careful about ruptures



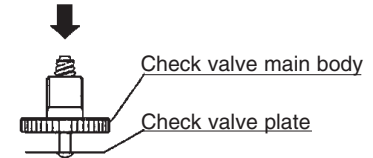
Before maintenance and inspection, be sure to turn off air supply, open release valve and release pressure. Pressure may remain in container by check valve even if pressure gauge shows 0MPa. If you remove container which is under pressure, liquid in container and parts may splash and fly, causing great danger.

Daily Inspection Gradually increase pressure of air regulator and check that safety valve activates (air leaks) between 3.0 bar and 3.5 bar. If something goes wrong with safety valve, contact the shop which sold it to you.

Check if lid packing is deformed, damaged or dirty. If it is deformed or damaged, replace it with new one.

- Weekly Inspection**
- 1. Turn check valve set counterclockwise and remove it from lid set.
 - 2. Refer to below drawing, push stem at the top of check valve set with a finger and open valve plate.
 - 3. Clean contact area between valve seat and plate with brush soaked with solvent.

Clean check valve



Every 6 months Overhaul and replace consumable parts with new ones. Refer to Parts List for consumable parts.

Check if container set is deformed or damaged. Never use deformed or damaged parts and immediately replace such parts with new ones.

Check during daily operation if liquid or air leaks. If liquid or air leaks, inspect all above items and firmly tighten lid if nothing goes wrong.

Remove fluid joint When you want to remove air regulator, remove fluid joint with high torque or apply heat to connecting section and disassemble since high strength adhesive has been applied to thread section of fluid joint.